

# High Temperature Ambient Lighting Solution



**IOHL** LED HIGH BAY LIGHT  
100W-420W

OVER YEARS   
**10 EXPERIENCE**  
[www.aokledlight.com](http://www.aokledlight.com)





## > Features of OHL Series

OHL series is designed for Indoor and Industrial lighting, a superior high efficiency LED High Bay light, featuring a unique optical design that virtually eliminates glare with minimal impact on performance. As a lighting solution for high temperature environment.

- Housing: Die cast aluminum.
- Light engine is thermally isolated from driver components.
- Aluminum body with epoxy paint.
- Installation: Fixture hook come as standard, pendant mount from 3/4" threaded conduit optional.
- Symmetrical for easy one-for-one replacement of existing high bays.
- Integrated motion sensor and wireless control optional.
- Rugged, weather-tight design and 3G Vibration ratings ensure durability even in harsh environments.

<b>UP TO</b> <b>175</b> lm/W	<b>100-277V</b> or <b>277-347V</b> 50/60HZ	<b>High-Temperature Environment</b> -40°C~70°C	<b>HIGH-TEMP</b> ISOLATED POWER SUPPLY	<b>L90B10</b> >52000hrs @ 25°C	<b>UGR</b> <22
<b>CRI</b> 70/80	• 2700K • 3000K • 4000K • 5000K • 5700K • 6500K	<b>THD</b> <20%	<b>ULR</b> =0	<b>IP66</b> <b>IK10</b>	

# Illuminate Your Future

**5** **10** **WARRANTY**  
5 Year Limited Warranty,  
10 Year Preferred Warranty.  
Please consult with our sales for detailed agreement.

wally@akledlight.com  
+1 626-986-4050 (US)  
+86 755 2357 9148 (CN)  
©2022 AOK LED LIGHT CO., LTD. All Right Reserved.





# > Application Reference



\*Due to the constant improvements in product development, individual parameters might change. Please refer to our sales or R&D team for most up-to-date content as specifications are subject to change without notice.



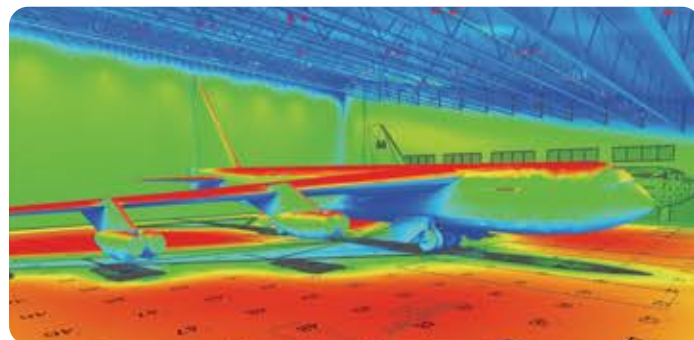
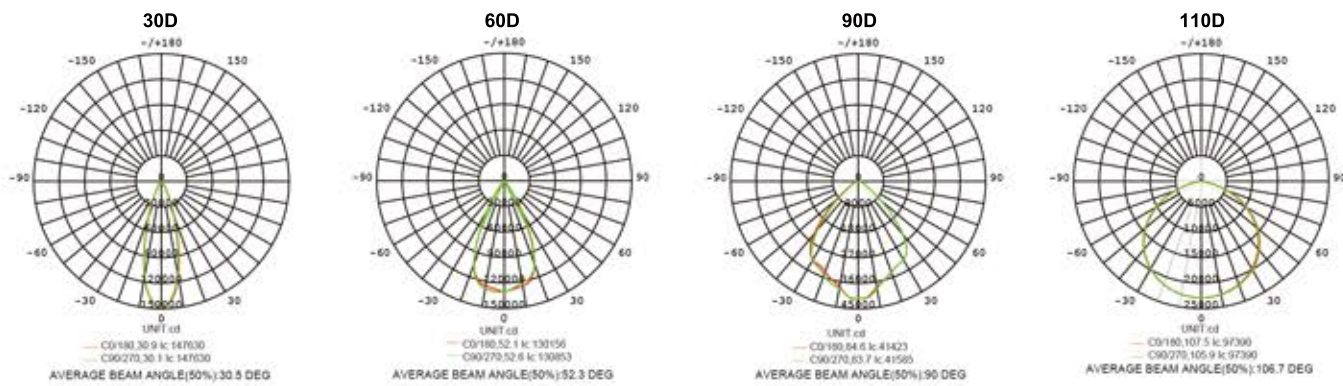
# Technical Specifications

MODEL	WATTS	VOLTAGE	EFFICACY	CRI	REPLACE HPS/MH	LENS	NW	FIXTURE DIMENSION
AOK-100WoHL	100W	100-277Vac 277-347Vac	140LMW@3000K 150LMW@5700K	Ra>70 Ra>80	200-400W	Tempered Glass 110°	12.78lbs (5.8kg)	Φ400*463mm" (Φ15.75*18.23in)
AOK-150WoHL	150W	100-277Vac 277-347Vac	140LMW@3000K 150LMW@5700K	Ra>70 Ra>80	400-600W	Tempered Glass 110°	12.78lbs (5.8kg)	Φ400*463mm" (Φ15.75*18.23in)
AOK-240WoHL	240W	100-277Vac 277-347Vac	150LMW@3000K 175LMW@5700K	Ra>70 Ra>80	600-800W	PC 30°/60°/90°	45.19lbs (20.5kg)	Φ468*468*218mm" (Φ15.75*18.23*8.5in)
AOK-300WoHL	300W	100-277Vac 277-347Vac	145LMW@3000K 170LMW@5700K	Ra>70 Ra>80	800-1000W	PC 30°/60°/90°	45.19lbs (20.5kg)	Φ468*468*218mm" (Φ15.75*18.23*8.5in)
AOK-420WoHL	420W	100-277Vac 277-347Vac	145LMW@3000K 170LMW@5700K	Ra>70 Ra>80	1000-1500W	PC 30°/60°/90°	45.19lbs (22.0kg)	Φ550*550*332.3mm" (Φ21.6*21.6*13.1in)

# Ordering information

AOK	-	-	-	-	-	-	-	-
WATTS	VOLTAGE	LED CHIPS	TYPE OF SENSOR	CCT&CRI	DISTRIBUTION	MOUNT	HOUSING	
100WoHL 150WoHL 240WoHL 300WoHL 420WoHL	NV=100-277V HV=227-347V	L3 = LUMILEDS3030 L5 = LUMILEDS5050	00= Without Sensor SN= Motion Sensor	2780=2700K 80CRI 3080= 3000K 80CRI 4080= 4000K 80CRI 5080= 5000K 80CRI 5780= 5700K 80CRI 6580= 6500K 80CRI	110D=110° 30D=30° 60D=60° 90D=90°	Chain Mount Hook Mount Pipe Mount Eye Bolt	BK=Black	

# Photometry

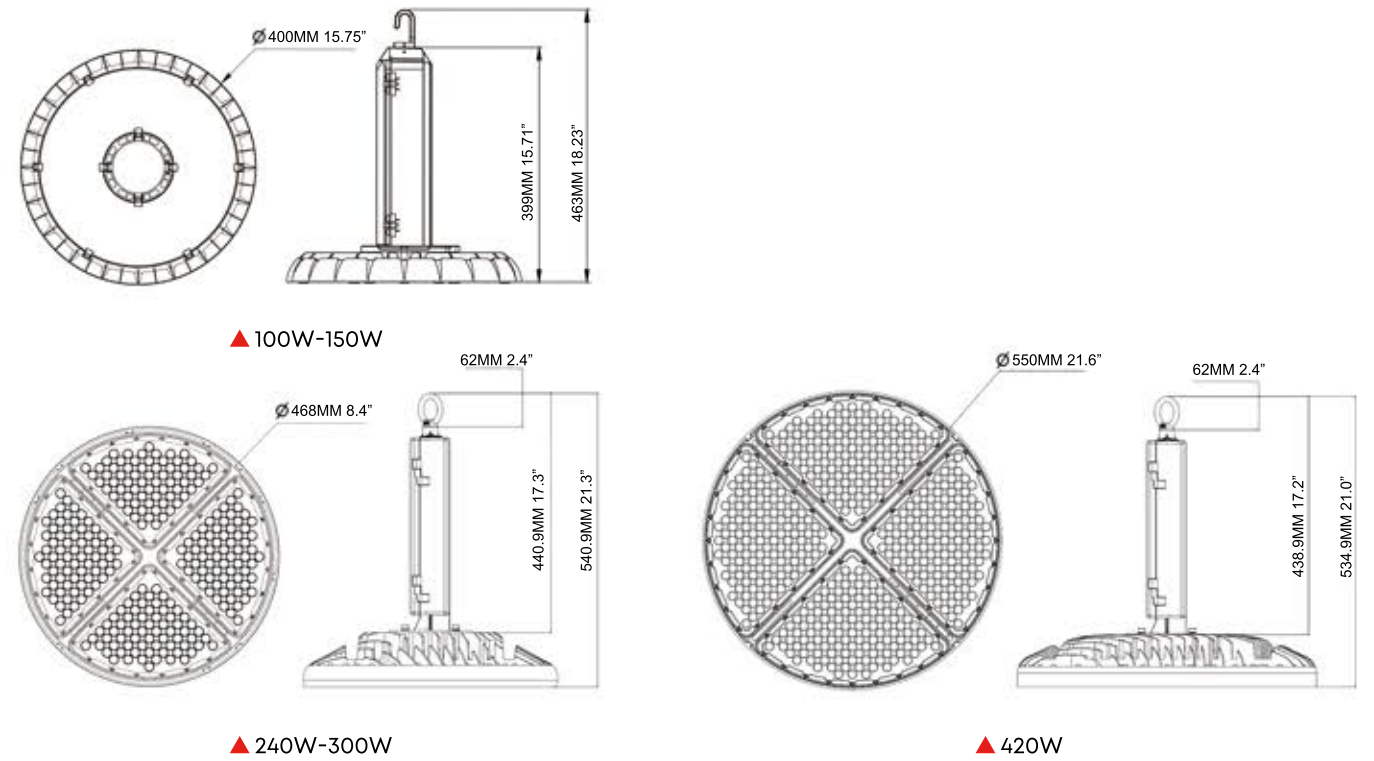


# Unified Glare Rating



Glare has always been a concern with LED products and it has got increasingly more attention with higher output fixtures. The standard low glare shield block lights outside of the main beam, so from other viewing angles the fixture virtually disappears. The low glare shields were also design to have minimum impact on the total light output.

# Fixture Dimensions



# OHL Series Specification Sheet

\*Due to the constant improvements in product development, individual parameters might change. Please refer to our sales or R&D team for most up-to-date content as specifications are subject to change without notice.

wally@oakledlight.com  
+1 626-986-4050 (US)  
+86 755 2357 9148 (CN)  
©2022 AOK LED LIGHT CO., LTD. All Right Reserved.





# Illuminate Your Future



5 Year Limited Warranty,  
10 Year Preferred Warranty.  
Please consult with our sales for detailed agreement.

wally@aokledlight.com  
www.aokledlight.com  
+1 626-986-4050 (US)  
+86 755 2357 9148 (CN)

Manufacturing: Building 1 & 4, St. George's Science and Technology Industrial Park, Shajing Street, Shenzhen, China, 518124.  
Fuzhou HQ: Room 301, Yujing Business Center Zone 1, No. 12 Baihuazhou road, Cangshan district, Fuzhou, China, 350007  
NorthAmerica HQ: 18541 E Gale Ave, City of Industry, CA91748 USA

Copyright ©2022 AOK LED LIGHT CO., LTD. All Right Reserved.